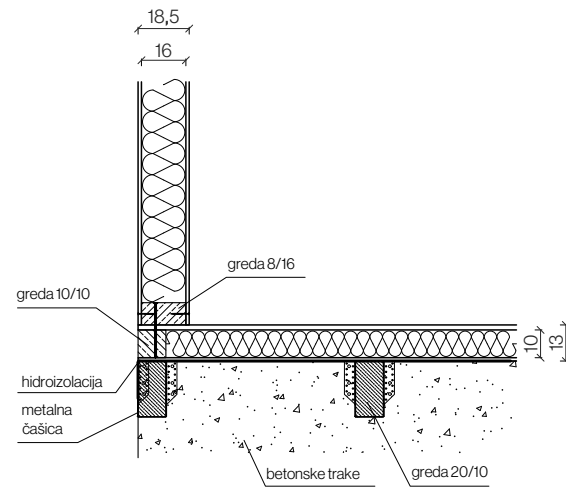
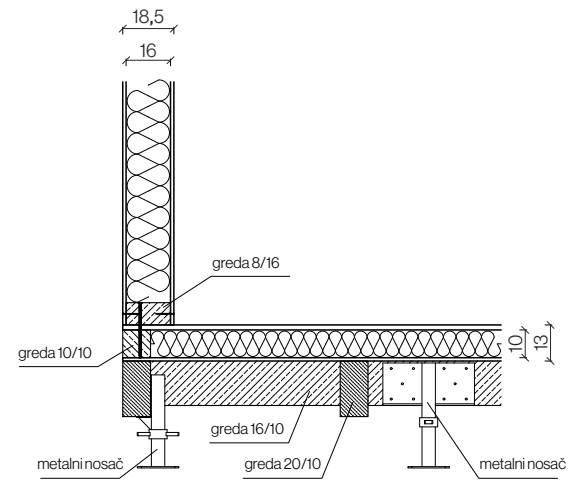


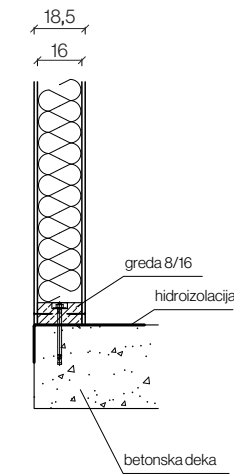
Temelj - temeljne trake
vertikalni presjek



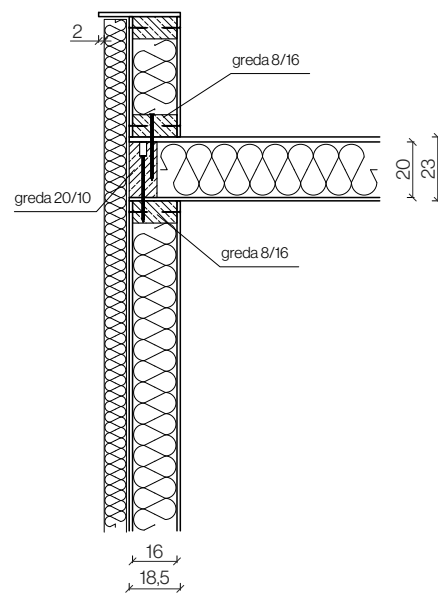
Temelj - drvena konstrukcija
vertikalni presjek



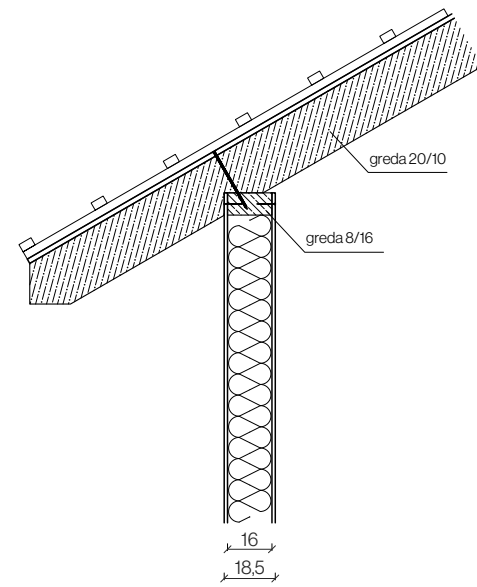
Temelj - betonska ploča
vertikalni presjek



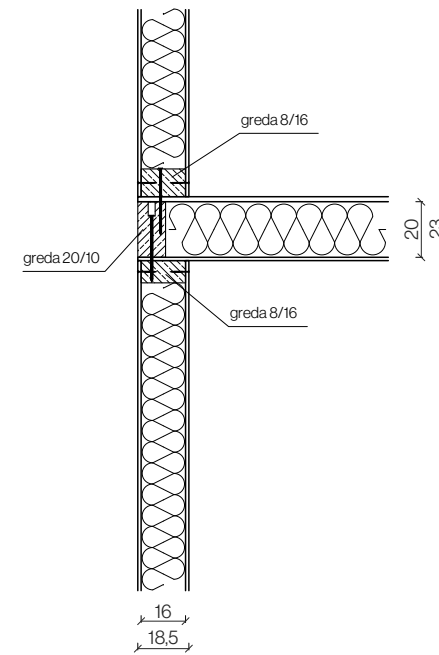
Ravni krov
vertikalni presjek



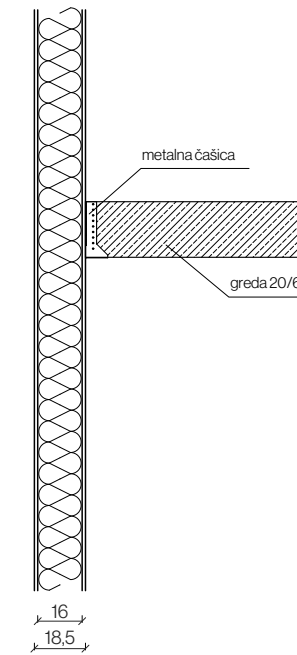
Kosi krov
vertikalni presjek



Strop
vertikalni presjek



Galerija
vertikalni presjek



SIP panel - sendvič konstrukcija sačinjena od slojeva: OSB+EPS100+OSB

- OSB3 ploča: 12-22 mm
- EPS100: 80-240 mm

Osnovna drvena konstrukcija:

- KVH grede
- Lamelirane grede
- I grede

KVH



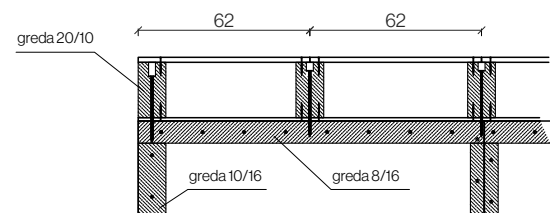
lamelirana



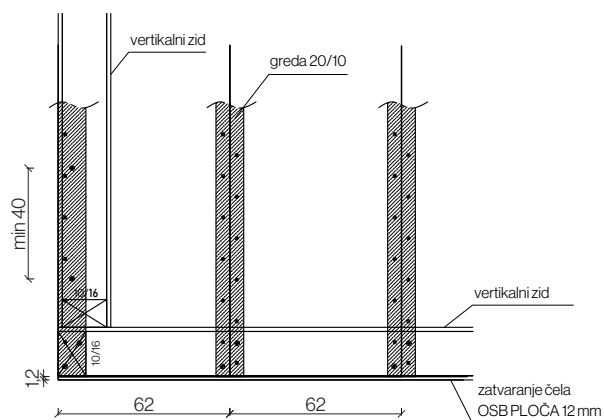
I



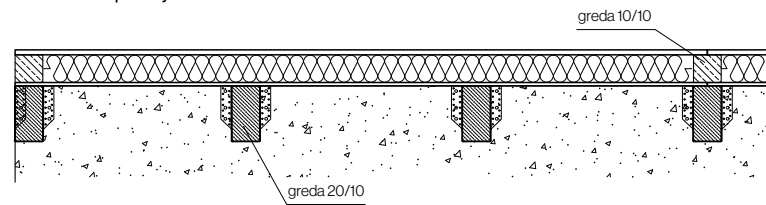
Strop
vertikalni presjek



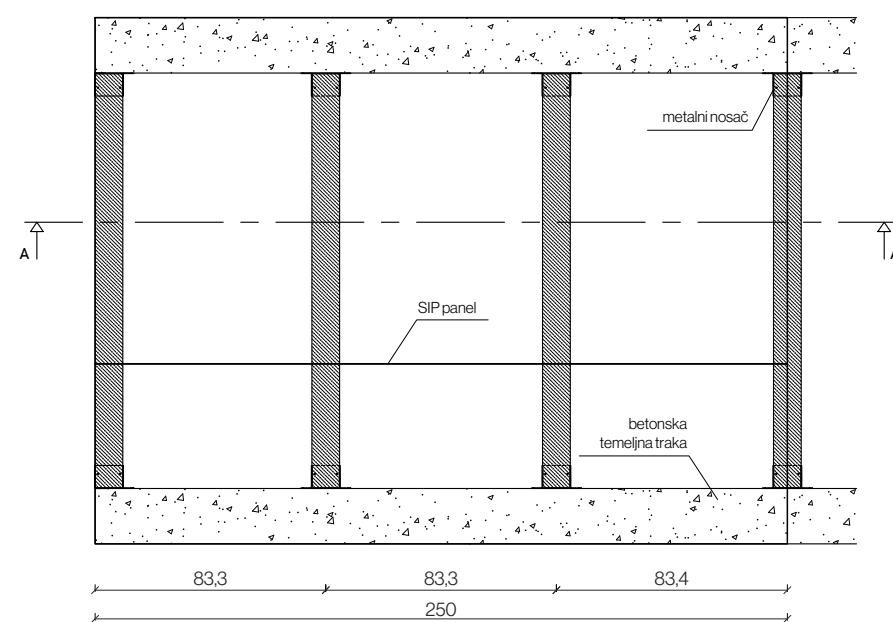
horizontalni presjek



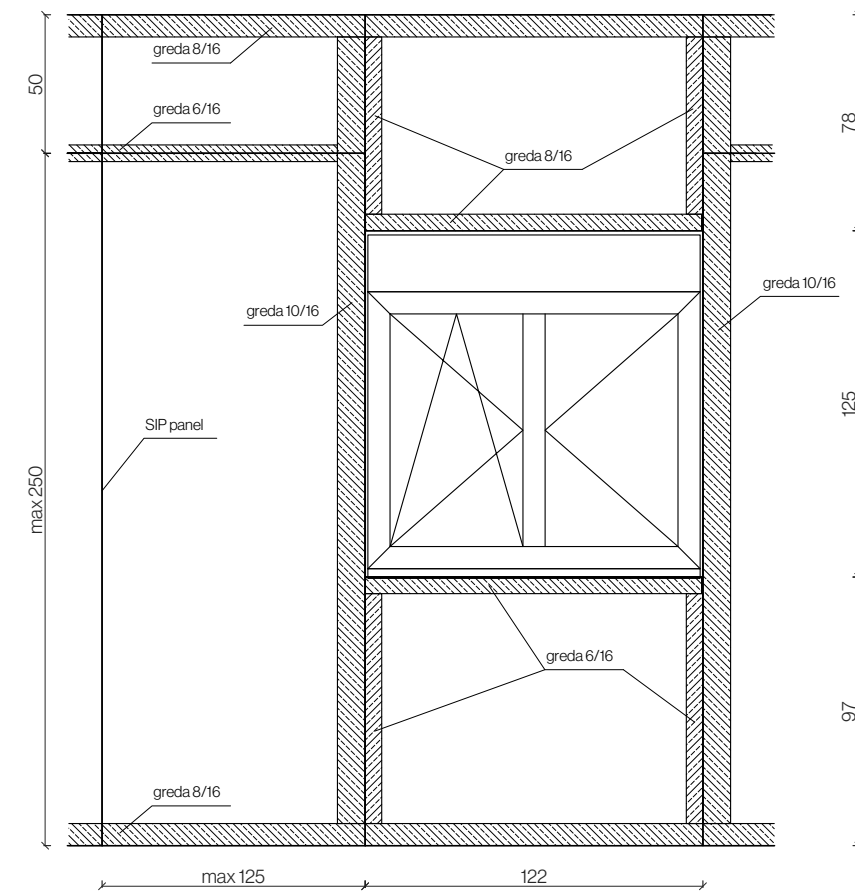
Temelj - temeljne trake
vertikalni presjek



horizontalni presjek



Vanjski zid - pogled
vertikalni presjek



Nosivi i pregradni zid
horizontalni presjek

